



Riga Decor for Interior Design Solutions

Natural Design and Harmony





Material Choices Matter

When building a harmonious and sustainable interior environment, choosing the right material matters. Wood is a natural and renewable resource that stores carbon, and offers a greener future for the building industry.

Our plywood is created by carefully cross bonding wooden veneers together. It is a durable, visually attractive, and environmentally friendly panel for a thoughtful and long-lasting design.

Why Riga Decor?

- Riga Decor combines the natural beauty of real wood veneers with the structural stability of birch plywood, creating a product that is both aesthetically pleasing and durable.
- Wide range of the best softwood and hardwood surfaces, available in different lengths and widths.
- Veneered surface can be stained, painted, coated, or varnished to achieve the desired finish and level of protection, providing designers with various options to meet their specific needs.
- The birch plywood core provides excellent screw holding properties for screws and other fittings, plus, it is easily machined.

Timeless Material

Riga Decor promotes the expression of unique design ideas with a versatile and functional product. It is well-suited for applications in the light building industry, including decorative wall and ceiling linings, joinery, furniture, as well as yachts and boats.



LIGHT BUILDING

Decorative wall
& Ceiling linings
Joinery, furniture
& Shop fittings



SEA TRANSPORT

Yachts & Boats



Doing Our
Part for the
Planet. Riga
ECOLOGICAL

Riga ECOlogical

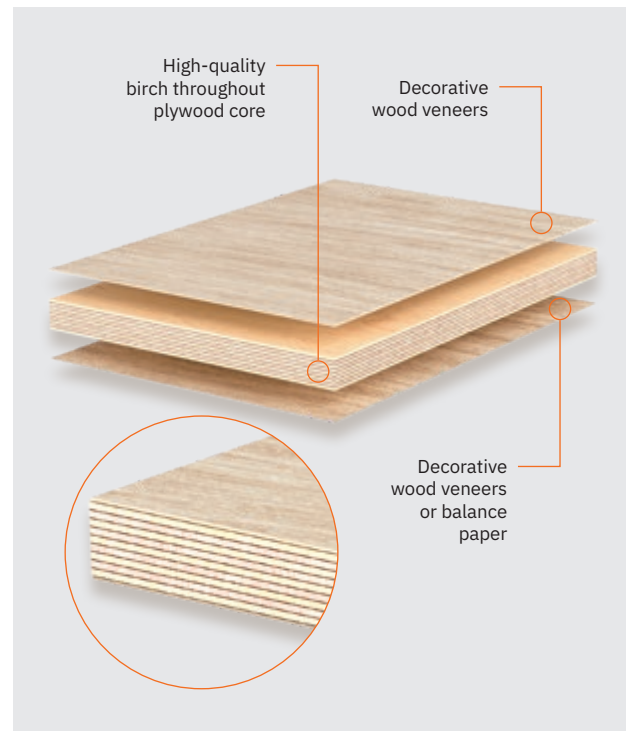
The environmentally friendly green glue Riga ECOlogical is our move towards a new sustainable plywood industry, using green bio-based renewable lignin as a replacement for traditional fossil products including phenol and formalin. Riga ECOlogical significantly reduces the carbon footprint of plywood products all the way from production to final end-use applications without compromising on technical performance. More information is available in the [Riga ECOlogical leaflet](#).

Decorative Finish in Natural Wood

Riga Decor is our birch throughout plywood, overlaid with decorative real wood veneers on one or both faces. Alternatively, the reverse face can be overlaid with balance paper. Riga Decor connects the functionality of birch plywood with the natural beauty and structure of wooden veneers. Ideal for furniture production and interior wall linings, Riga Decor adds warmth, texture, and character to any space.

Decorative Wood Veneers

Each wood species has its own distinctive and unique character, grain pattern and colour. No two trees are the same, and this natural uniqueness is clearly reflected in wood veneers. The vast range of veneered surfaces gives the designer freedom to express their creativity while keeping the excellent mechanical properties of birch plywood. Our standard veneer surfaces include Birch, Ash, Oak, Pine, and Walnut. Other wood species are available on request.



Birch



Ash



Oak



Pine



Walnut



Rooted in performance,
Riga Decor plywood brings
warmth and comfort



Project: Albatross Loft Apartments, Ķesterciems, Latvia

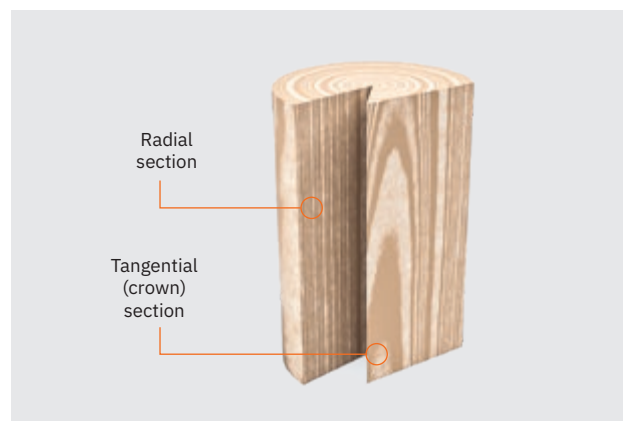


Project: Sports and Education Center, Alūksne, Latvia



Slicing Techniques

Both sliced and peeled veneers of tangential (crown)/radial section are used in Riga Decor, applying different jointing techniques. The choice of slicing method contributes to the distinctive grain pattern, influenced by the wood structure of various tree species.



Rotary cut

The log is rotated and peeled as it turns, making a uniform and continuous pattern.



Crown cut

Slicing through the heart of the log, creating a flame pattern in the grain.



Quarter cut

Used to achieve a straight grain; cut at right angles to the growth rings.

Veneer Jointing Techniques

The sliced wood is skilfully joined into a veneer sheet using different techniques to achieve the desired decorative look. Riga Decor follows the standard book match +180° jointing technique, with custom layups available upon request.



Book matched

The sliced veneer strips are mirrored, side by side so that each strip reflects the adjacent one, just like in a book. Slicing technique: crown or quarter cut.



Book matched +180°

The veneer strips are mirrored and turned 180 degrees alternately. This is the standard veneer jointing technique we offer. Slicing technique: crown or quarter cut.



Slip matched

The veneer strips are jointed one next to the other in the same orientation to create a consecutive pattern.



Slip matched +180°

Similar to the slip match technique just every second veneer strip is turned 180 degrees.



Mix-matched

Jointed in random order and orientation, different-width veneer strips give a mixed yet cohesive look.

Custom layups
available upon request

Veneering

Veneering is usually done with 0.55 mm thick veneers, customised thicknesses are available on request. Veneer grades (A, AB, B) are carefully chosen to meet customer specifications, while the core is built on a BB/BB grade-based Riga Ply.

Customised Options

Further processing can be offered to specification: cut-to-size, CNC machining, edge machining and assembling in sets. For applications requiring acoustic performance, perforated and grooved acoustic panels are available. Please see the Acoustic Panels brochures for further information, available at www.rigawood.com.

Edge Sealing

The exposed multi-ply edges provide a unique design element and can be sealed or lacquered upon request.

Surface Properties and Finishing

The surface of Riga Decor is smooth and dense, showcasing a beautiful natural wood structure. It is offered in both uncoated and lacquered options. Various lacquering systems are available upon request, including:

- LC: acid catalysed solvent based
- LPU: acrylic-based polyurethane
- LUV: UV curing

Controlled Emissions

Riga Decor formaldehyde emission level complies with EN 13986 Class E1, EPA TSCA Title VI and CARB Phase 2.



Bonding

Riga Decor plywood core can be glued with lignin, phenolic or melamine glue.

In lignin glue (Riga ECOlogical) traditional fossil products are partly replaced by 100% bio-based kraft lignin, adding value to forest industry side streams. Both lignin phenol formaldehyde and phenol formaldehyde resin adhesives are weather and boil-proof according to EN 314 / Class 3 Exterior.

For white glue seams, melamine glue should be chosen. Low emission melamine-urea-formaldehyde resin is moisture resistant according to EN 314 / Class 1 and BS 1203 / H1.

The decorative veneer is bonded with a combination of melamine-urea-formaldehyde (MUF) adhesive and hardener intended for end-uses where water and weather resistance is required.

Standard Thicknesses

Thickness, mm	4*	6.5	9	12	15	18	21	24	27	30	35*	40*	45*	50*
---------------	----	-----	---	----	----	----	----	----	----	----	-----	-----	-----	-----

Please note that the panel sizes marked with an asterisk (*) cannot be lacquered at our mills. Clients are welcome to arrange for lacquering independently if required.

To the indicated values, decorative veneer (0.5 mm) and/or balance paper (0.15 mm) thicknesses should be added.

Panel sizes

2440 / 2500 / 3050 mm × 1220 / 1250 / 1500** / 1525** mm
--

All panel sizes can be lacquered, the ones marked with asterisks (**) are exclusively available for our LUV lacquering system.

Tolerance

Nominal thickness, mm	4	6.5	9	12	15	18	21	24	27	30	35	40	45	50
Number of plies	3	5	7	9	11	13	15	17	19	21	25	29	32	35
Lower limit, mm	3.5	6.1	8.8	11.5	14.3	17.1	20	22.9	25.8	28.7	33.6	38.4	43.3	48.1
Upper limit, mm	4.1	6.9	9.5	12.5	15.3	18.1	20.9	23.7	26.8	29.9	35.4	41.2	46.4	51.5

Moisture content affects plywood dimensions; indicated sizes and thicknesses relate to a moisture content $9 \pm 3\%$.

Parameter	Tolerance
Length, width (mm) ≤ 500	± 0.5 mm
Length, width (mm) – 500..2000	± 1 mm
Length, width (mm) ≥ 2001	± 2 mm
Max difference of diagonals ≤ 500	± 0.5 mm
Max difference of diagonals 500..2000	± 1 mm
Max difference of diagonals ≥ 2001	± 2 mm
Edge straightness	± 1 mm/m

Size, edge squareness and thickness tolerances fulfil the requirements of EN 315.
Customised tolerances are available on request.

Sustainable Plywood

Produced in the European Union adhering to top sustainable forestry practices, Riga Wood plywood holds PEFC certification. Our timber supply chain is meticulously managed to align with EU Timber Regulation, ensuring responsible governance.

Opting for our plywood not only supports carbon storage but also contributes to climate change mitigation. We are committed to continuously improving our sustainability initiatives, fostering collaboration with stakeholders, suppliers, and clients.





Riga Wood – the market arm of Latvijas Finieris Group offers

01

A wide product portfolio and services
numerous standard products and
endless variation possibilities.

02

End-use experts
who provide excellent product
information to find the best possible
solution for each industry/application.

03

Our Flexibility and client
orientation offer many tailor-made
and customised product and logistics
solutions to meet your specific needs.

04

**Our 12 Sales and Product
Development Offices**
offer direct contact to a regional sales
office supported by an international
manufacturing network.

05

Sustainability
offering sustainably managed
products and brands.

Grown by Nature.
Tailored by Us.

rigawood.com
info@rigawood.com



Address
Bauskas street 59
LV 1004 Riga, Latvia